

FFS-G Series

STAINLESS STEEL PUMP



Soild Shaft Ø60mm

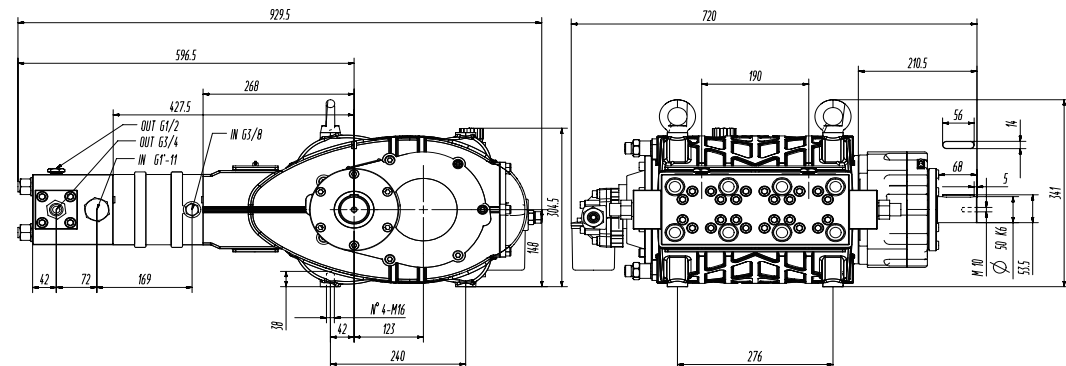
SPECIFICATIONS

Pump Model	FFS-G 25150	FFS-G 30130	FFS-G 45100	FFS-G 6080
Flow Rate (L/min)	27	33.9	48	65
Pressure (bar)	1500	1300	1000	800
Power (kw)	67.5	73.5	80	86.7
RPM	600	600	600	800
Shaft Diameter (mm)	60			
Plunger Stroke (mm)	60			
Plunger Diameter (mm)	18	20	24	24
Oil Capacity (ml)	9000			
Inlet Thread	G 1"			
Outlet Thread	G 3/4			
Weight (kg)	68			
Dimensions (mm)	930X720X341			

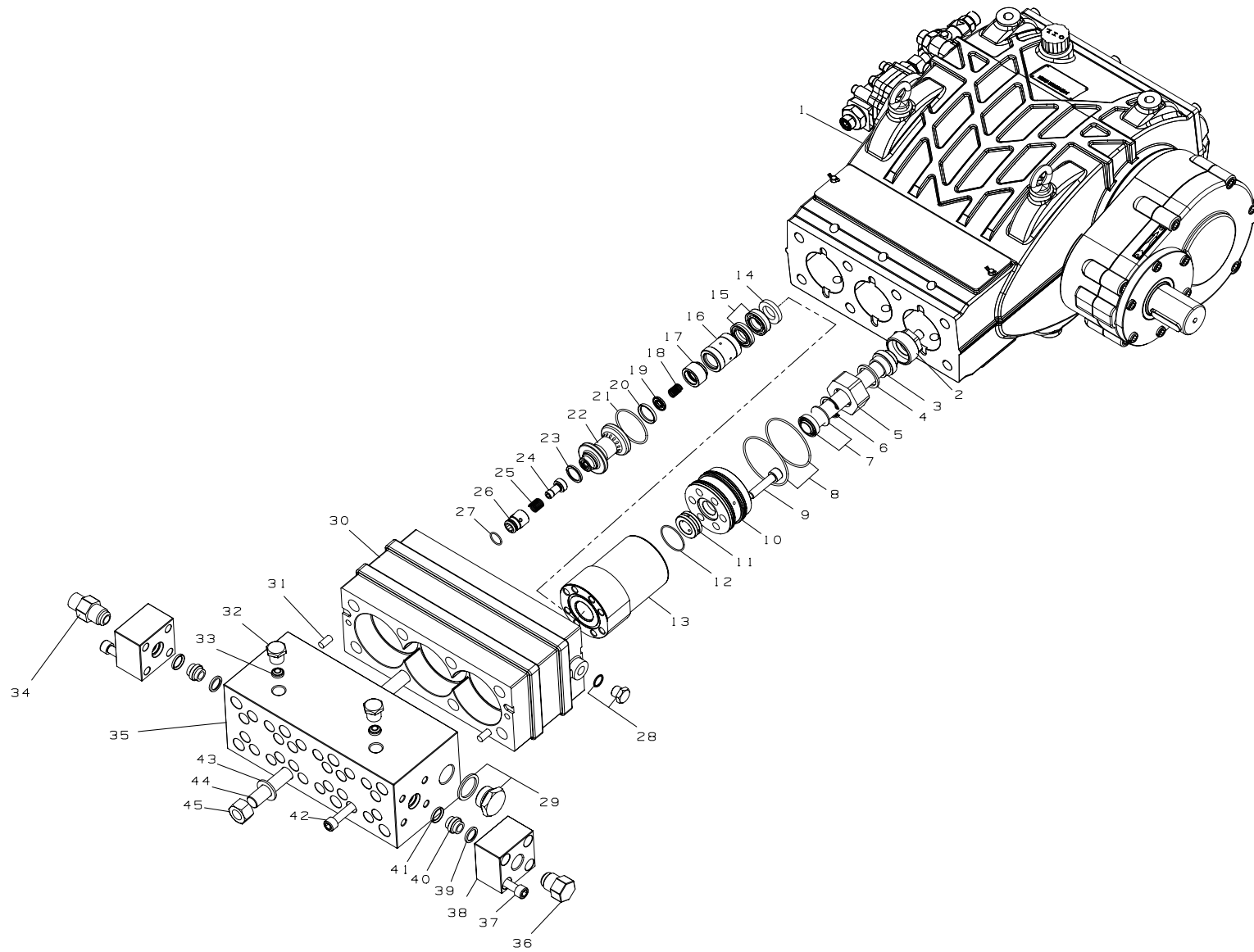
FEATURES

- The crankcase is made of a cast iron housing, providing strong durability.
- High-strength crankshaft with carburized surface treatment.
- High-strength connecting rods with bearing shells.
- The fluid end pump head is made of high-strength stainless steel, ensuring stable performance.
- The fluid end is designed for easy disassembly, reducing maintenance and downtime.

DIMENSIONS (mm)



EXPLODED VIEW



COMPONENTS

ITEM	Name	QTY	ITEM	Name	QTY	ITEM	Name	QTY
1	Crankcase with Gearbox	1	16	Seal Support Ring	3	31	Pin	2
2	Plunger Connecting Bolt	3	17	Suction Valve Seat	3	32	High-Pressure Plug	2
3	Plunger	3	18	Suction Valve Spring	3	33	High-Pressure Plug Seal Ring	2
4	Plunger Cushion Pad	3	19	Suction Valve Plate	3	34	High-Pressure Outlet Fitting	1
5	Plunger Connecting Nut	3	20	Suction Valve Body O-Ring	3	35	Pump Head	1
6	Low-Pressure Water Seal Retaining Ring	3	21	Cylinder Head Seal Ring	3	36	High-Pressure Outlet Plug	1
7	Low-Pressure Water Seal	3	22	Valve Body	3	37	Outlet Valve Block Connecting Bolt	8
8	Cooling Water Seal Ring	6	23	Discharge Valve Body O-Ring	3	38	Outlet Valve Block	2
9	High-Pressure Cylinder Connecting Bolt	18	24	Discharge Valve Plate	3	39	Outlet Valve Block Seal Ring	2
10	High-Pressure Cylinder Rear Seat	3	25	Discharge Valve Spring	3	40	Outlet Valve Block Positioning Ring	2
11	High-Pressure Cylinder Positioning Seat	3	26	Discharge Valve Seat	3	41	Outlet Valve Block Seal Ring	2
12	High-Pressure Cylinder Rear Seal Ring	3	27	Discharge Valve Seat O-Ring	3	42	Pump Head to Cylinder Connecting Bolt	24
13	High-Pressure Cylinder	3	28	Cooling Water Plug	2	43	M20 Flat Washer	8
14	Water Seal Brass Seat	3	29	Water Inlet Plug	2	44	M20 Stud Bolt	8
15	High-Pressure Water Seal	6	30	Adapter Plate	1	45	M20 Nut	8

REPAIR KITS

Index	6	7	8	12	15	19
Name	Low-Pressure Water Seal Retaining Ring	Low-Pressure Water Seal	Cooling Water Seal Ring	High-Pressure Cylinder Rear Seal Ring	High-Pressure Water Seal	Suction Valve Plate
Quantity	3	3	6	3	6	3

Index	21	23	24	27	39	41
Name	Cylinder Head Seal Ring	Discharge Valve Body O-Ring	Discharge Valve Plate	Discharge Valve Seat O-Ring	Outlet Valve Block Seal Ring	Outlet Valve Block Seal Ring
Quantity	3	3	3	3	2	