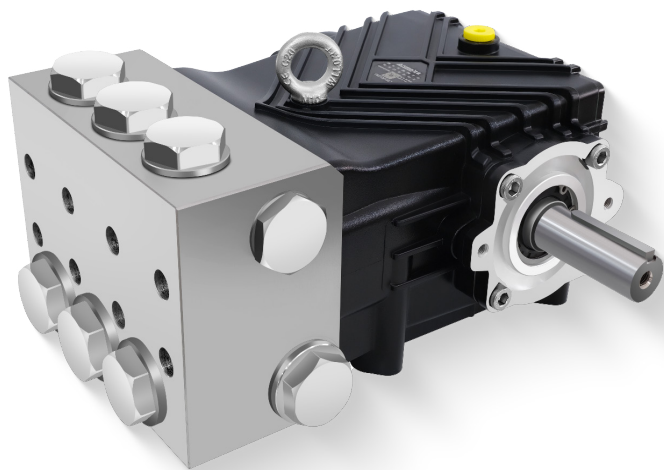


FDL Series

STAINLESS STEEL PUMP



Soild Shaft Ø30mm

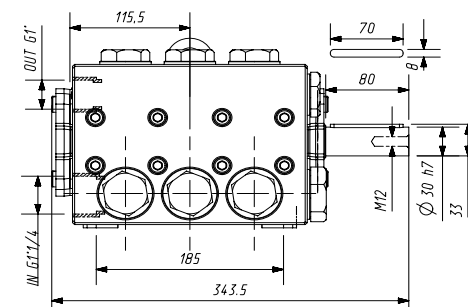
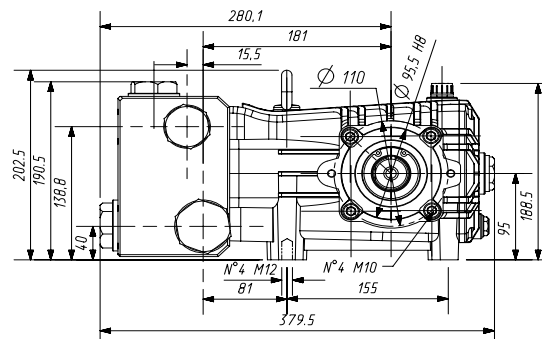
SPECIFICATIONS

Pump Model	FDL 10015	FDL 12013	FDL 15010	FDL 6915	FDL 8213	FDL 10310
Flow Rate (L/min)	100	120	150	69	82.8	103
Pressure (bar)	150	130	100	150	130	100
Power (kw)	28.8	30	28.8	19.9	20.7	19.9
RPM	1450	1450	1450	1000	1000	1000
Shaft Diameter (mm)	30					
Plunger Stroke (mm)	22	28	34	23	28	34
Plunger Diameter (mm)	36	36	36	36	36	36
Oil Capacity (ml)	1700					
Inlet Thread	G 1"1/4					
Outlet Thread	G 1"					
Weight (kg)	39.5					
Dimensions (mm)	380x344x189					

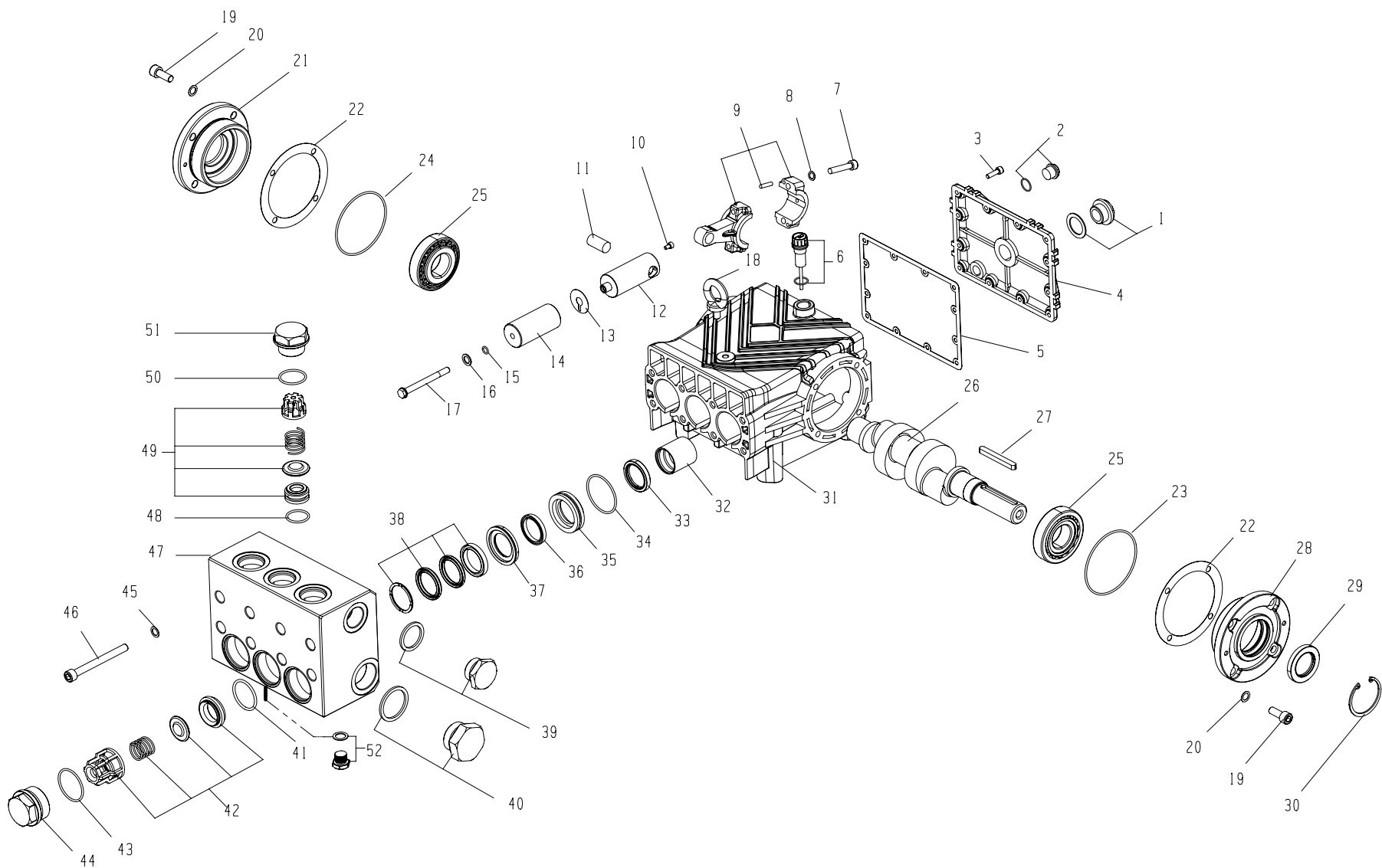
FEATURES

- Stainless-steel high-flow pump head provides corrosion resistance and stability for high-flow operation.
- Forged crankshaft with surface nitriding improves strength and wear resistance.
- The connecting rod is made of a Zn–Cu alloy, improving wear resistance and helping reduce operating noise.
- Tapered roller bearings improve load capability and durability.
- Ceramic plungers with smooth surface finish for long service life.

DIMENSIONS(mm)



EXPLODED VIEW



COMPONENTS

ITEM	PART NO.	Name	QTY	ITEM	PART NO.	Name	QTY	ITEM	PART NO.	Name	QTY
1	7.906-160	Oil Sight Glass	1	19	7.301-023	End Cap Screws	3	36	7.906-370	Low-Pressure Water Seal	3
2	7.400-011	Plug	1	20	7.906-145	End Cover Screws And Gaskets	3	37	7.906-059	Copper Pressure Ring	3
3	7.301-007	Rear Cover Screws	12	21	7.906-011.4	Side Cover	3	38	7.906-369	High-Pressure Water Seal	3
4	7.906-011.4	Rear Cover	1	22	7.906-048	Bearing Adjustment Shim	1	39	7.906-168	G1" Plug	1
5	7.906-010.3	Rear Cover Oil Washer	1	23	7.906-019.9	End Cover Seal	1	40	7.906-169	G1"1/4 Plug	1
6	7.906-034	Dipstick	1	24	7.906-019.9	End Cover Seal	3	41	7.906-049.11	Inlet Valve Seal Ring	3
7	7.301-020	Connecting Rod Screws	6	25	7.906-014.3	Bearing	3	42	7.906-105	Inlet Valve	3
8	7.301-031	Connecting Rod Screws Washers	6	26	7.906-025.17	Crankshaft	3	43	7.906-049.10	Inlet Valve Gland Sealing Ring	3
9	7.906-001.6	Copper Connecting Rod	6	27	7.906-035.3	Parallel Key	3	44	7.906-107	Inlet Valve Gland	3
10	7.301-017	Plunger Rod Screw	6	28	7.906-011.4	Side Cover	8	45	7.906-145	Double-Sided Toothed Washer	8
11	7.906-033.4	Plunger Rod Pin	3	29	7.906-051.3	Rotating Oil Seal	8	46	7.301-024	Stud	8
12	7.906-002.6	Plunger Rod	3	30	7.301-035	Rotating Oil Seal Circlip	1	47	7.906-058	Stainless Steel Pump Head	1
13	7.906-129	Water Seal Washer	3	31	7.906-011.4	Crankcase	3	48	7.906-049.12	Discharge Valve Seal	3
14	7.906-233	Ceramic Plunger	3	32	7.906-079	Crankcase Copper Sleeve	3	49	7.906-106	Discharge Valve	3
15	7.906-049.14	Ceramic Plunger Seal	3	33	7.906-051.4	Crankcase Oil Seal	3	50	7.906-049.13	Discharge Valve Gland Sealing Ring	3
16	7.906-136	Ceramic Plunger Washer	3	34	7.906-049.9	Guide Seat Seal Ring	3	51	7.906-004	Discharge Valve Gland Screw	3
17	7.301-036	Ceramic Plunger Screw	3	35	7.906-103	Guide Seat	1	52	7.400-011	Plug	1
18	7.301-016	Hanging Ring	1								

REPAIR KITS

Water Seal Kit		
Index	36	38
Part Number	7.906-370	7.906-369
Name	Low-Pressure Water Seal	High-Pressure Water Seal
Quantity	3	3

Oil Seal Kit		
Index	29	33
Part Number	7.906-051.3	7.906-051.4
Name	Rotating Oil Seal	Crankcase Oil Seal
Quantity	1	3

Valve Kit				
Index	41	42	48	49
Part Number	7.906-049.11	7.906-105	7.906-049.12	7.906-106
Name	Inlet Valve Seal Ring	Inlet Valve	Discharge Valve Seal	Discharge Valve
Quantity	3	3	3	3

Plunger Kit	
Index	14
Part Number	7.906-233
Name	Ceramic Plunger
Quantity	3