



Marine High Pressure Washer

Specialized in Ship Cleaning for 25 Years



用水创造价值
Create Value with Water Power

Guangdong Fussen Waterjet Technology Co., Ltd.

☎ +86 133 1285 1122

✉ lantian@fussen.com.cn

🌐 www.fussenpump.com

📍 Building 3, No.9 Shunying Road, Shunde District, Foshan, China



www.fussenpump.com

COMPANY PROFILE

About Us

Founded in 2001, Fussen has been consistently dedicated to the research, development, and innovation of high-pressure water jet technology, with more than 20 years of technical expertise in high-pressure plunger pumps.

Through advanced manufacturing processes and strict quality control, Fussen delivers pumps that are high quality, durable, and reliable. Our equipment is widely applied in ship cleaning, industrial paint and rust removal, petrochemicals, and building maintenance, and has gained broad recognition in both domestic and international markets.



Professional



International



Brand-Oriented



Professional

Professional High-Pressure Cleaning Technology

Fussen develops advanced high-pressure pump technology that ensures efficiency, durability, and stability across diverse industrial applications.

The high-pressure pump, as the core component of a high-pressure cleaner, directly determines the overall efficiency and stability of the system. With deep insights into industry requirements, Fussen has developed a comprehensive range of professional cleaning solutions designed to meet diverse needs across different pressure levels, flow rates, and working environments.

Fussen's high-pressure plunger pumps are engineered with strict material selection, high-precision machining, and advanced sealing technology to ensure reliability and performance.

Fussen pumps are equipped with ceramic and alloy steel plungers to ensure reliable performance and durability. The ceramic plungers offer excellent wear and corrosion resistance with a smooth, low-friction surface that extends seal life, while the alloy steel plungers provide exceptional strength and impact resistance for high-pressure applications. Together with high-quality water and oil seals, the system maintains stable operation and long service life. For particularly demanding environments, Fussen also provides customized corrosion-resistant and high-temperature-resistant seal solutions. As a result, the pumps deliver reliable stability, superior efficiency, and extended durability under diverse operating conditions.



International

International Quality Standards and Worldwide Reach

Fussen is committed to delivering products that meet the highest international standards and are shipped to customers worldwide.

The company operates in full compliance with the ISO9001 quality management system, ensuring excellence throughout design, production, testing, and service. All products are CE certified and comply with international safety requirements. With outstanding quality and consistent reliability, Fussen's pumps are widely used across Europe, the Middle East, Southeast Asia, and South America. Through long-term partnerships and a proven record of performance, the company has earned the trust of customers around the globe.



Brand-Oriented

Creating Value with Water

Fussen's brand philosophy is built on the belief that water is not only a resource but also a force for creating value.

The company is committed to delivering high-quality pumps while advancing intelligent, efficient, and eco-friendly cleaning technology. Through continuous investment in research, development, and product optimization, Fussen leads the high-pressure water jet industry forward. Looking to the future, the company will continue to innovate and provide global customers with more professional, reliable, and sustainable cleaning solutions.

25+

Years of Experience

200+

Patents

5000m²

Factory

HONORS



CERTIFICATE OF MEMBERSHIP

This is to certify that
Guangdong Fussen Waterjet Technology Co., Ltd.
October 2025 – September 2026
has been approved as a **Supplier Member**
of the International Marine Purchasing Association

IMPA2103441
Membership Number

Susan Koefoed

Susan Koefoed
IMPA Chair & CEO



Founded in 1978, the International Marine Purchasing Association has been the leading Association for marine purchasing and supply professionals across the globe. The present member has fulfilled all requirements related to the application process and commits to observing the Association's Bylaws.



Certifications



Patents





APPLICATIONS



FAE SERIES

Electric High Pressure Washer



Key Components

| | |
|------------------------------------|----------------------|
| ■ Intelligent Electric Control Box | ■ Carbon Steel Frame |
| ■ Industrial-Grade Motor | ■ Solid Tires |
| ■ High-Pressure Plunger Pump | ■ Swivel Wheels |
| ■ Pressure Regulating Valve | ■ High-Pressure Gun |
| ■ High-Precision Filter | ■ Fan-Shaped Nozzle |
| ■ Stainless Steel Pressure Gauge | ■ High-Pressure Hose |

Optional Accessories



Rotating Nozzle



Brass Pump



Nickel Plated Brass Pump



Stainless Steel Pump

Features



Easy to Move

Compact design, stylish, space-saving.



Industrial-Grade Motor

Four-pole, low-speed motor with low noise,high durability, and long service life.



Premium Plunger Pump

Ceramic plungers and durable seals ensure long-term stable performance.



Energy-Saving

Pressure switch stops the motor when the gun is released.

Models and Specifications

| Model | Voltage (Ph/V/Hz) | Flow Rate (L/min) | Pressure (Bar/Mpa/PSI) | Power (kW) | RPM (Rpm) | Weight (kg) | Dimensions (L x W x H mm) |
|-----------|------------------------|------------------------|-----------------------------|-----------------|----------------|------------------|--------------------------------|
| FAE 15/15 | 3/380/50 | 15 | 150/15/2175 | 4.0 | 1450 | 68 | 640 x 640 x 500 |
| FAE 15/20 | 3/380/50 | 15 | 200/20/2900 | 5.5 | 1450 | 78 | 640 x 640 x 500 |
| FAE 15/25 | 3/380/50 | 15 | 250/25/3625 | 7.5 | 1450 | 85 | 650 x 640 x 500 |
| FAE 18/20 | 3/380/50 | 18 | 200/20/2900 | 7.5 | 1450 | 85 | 650 x 640 x 500 |

FME SERIES

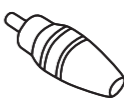
Electric High Pressure Washer



Key Components

| | |
|---|-------------------------|
| ■ Intelligent Electric Control Box (Soft Start) | ■ Solid Tires |
| ■ Industrial-Grade Motor | ■ Swivel Wheels |
| ■ High-Pressure Plunger Pump | ■ High-Pressure Hose |
| ■ Pressure Regulating Valve | ■ High-Pressure Gun |
| ■ Safety Valve | ■ Fan-Shaped Nozzle |
| ■ High-Precision Filter | ■ Stainless Steel Frame |
| ■ Stainless Steel Pressure Gauge | |

Optional Accessories



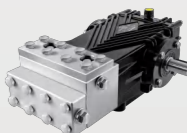
Rotating Nozzle



Brass Pump



Nickel Plated Brass Pump



Stainless Steel Pump

Features



Easy to Move

Compact design, stylish look, and space-saving.



Industrial-Grade Motor

Four-pole, low-speed motor with low noise, high durability, and long service life.



Intelligent Soft Start

Smooth start/stop system extends machine lifespan.



Premium Plunger Pump

Stainless steel pump with ceramic plungers and durable seals for stable, long-term performance.



Stainless Steel Frame

Strong, durable, and highly corrosion-resistant.

Models and Specifications

| Model | Voltage (Ph/V/Hz) | Flow Rate (L/min) | Pressure (Bar/Mpa/PSI) | Power (kW) | RPM (Rpm) | Weight (kg) | Dimensions (L x W x H mm) |
|-----------|------------------------|------------------------|-----------------------------|-----------------|----------------|------------------|--------------------------------|
| FME 21/35 | 3/380/50 | 21 | 350/35/5075 | 15 | 1450 | 200 | 950 x 700 x 900 |
| FME 15/50 | 3/380/50 | 15 | 500/50/7250 | 15 | 1450 | 200 | 950 x 700 x 900 |
| FME 22/50 | 3/380/50 | 22 | 500/50/7250 | 22 | 1450 | 230 | 980 x 700 x 920 |
| FME 18/60 | 3/380/50 | 18 | 600/60/8700 | 22 | 1450 | 230 | 980 x 700 x 920 |
| FME 18/50 | 3/440/60 | 18 | 500/50/7250 | 18 | 1750 | 200 | 950 x 700 x 900 |

FWE SERIES

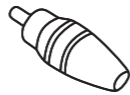
Electric High Pressure Washer



Key Components

| | |
|---|------------------------------|
| ■ Intelligent Electric Control Box (Soft Start) | ■ Stainless Steel Water Tank |
| ■ Industrial-Grade Motor | ■ Solid Tires |
| ■ High-Pressure Plunger Pump | ■ Swivel Wheels |
| ■ Pressure Regulating Valve | ■ High-Pressure Hose |
| ■ Safety Valve | ■ High-Pressure Gun |
| ■ High-Precision Filter | ■ Fan-Shaped Nozzle |
| ■ Stainless Steel Pressure Gauge | ■ Stainless Steel Frame |

Optional Accessories



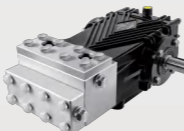
Rotating Nozzle



Brass Pump



Nickel Plated Brass Pump



Stainless Steel Pump

Features



Easy to Move

Compact design, stylish look, and space-saving.



Industrial-Grade Motor

Four-pole, low-speed motor with low noise, high durability, and long service life.



Intelligent Soft Start

Smooth start/stop system extends machine lifespan.



Premium Plunger Pump

Stainless steel pump with ceramic plungers and durable seals for stable, long-term performance.



Stainless Steel Frame

Strong, durable, and highly corrosion-resistant.

Models and Specifications

| Model | Voltage (Ph/V/Hz) | Flow Rate (L/min) | Pressure (Bar/Mpa/PSI) | Power (kW) | RPM (Rpm) | Weight (kg) | Dimensions (L x W x H mm) |
|-----------|------------------------|------------------------|-----------------------------|-----------------|----------------|------------------|--------------------------------|
| FWE 21/35 | 3/380/50 | 21 | 350/35/5075 | 15 | 1450 | 200 | 950 x 700 x 900 |
| FWE 15/50 | 3/380/50 | 15 | 500/50/7250 | 15 | 1450 | 200 | 950 x 700 x 900 |
| FWE 22/50 | 3/380/50 | 22 | 500/50/7250 | 22 | 1450 | 230 | 980 x 700 x 920 |
| FWE 18/60 | 3/380/50 | 18 | 600/60/8700 | 22 | 1450 | 230 | 980 x 700 x 920 |
| FWE 18/50 | 3/440/60 | 18 | 500/50/7250 | 18 | 1750 | 200 | 950 x 700 x 900 |

FDE SERIES

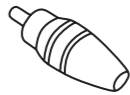
Electric High Pressure Washer



Key Components

| | |
|---|------------------------------------|
| Intelligent Electric Control Box (Soft Start) | ■ High-Precision Filter |
| Industrial-Grade Motor | ■ Stainless Steel Heavy-Duty Frame |
| Stainless Steel High-Pressure Plunger Pump | ■ Water Tank |
| Pressure Regulating Valve | ■ Swivel Wheels |
| Safety Valve | ■ Dump Gun |
| Stainless Steel Pressure Gauge | ■ Fan-Shaped Nozzle |
| Y Type Filter | ■ High-Pressure Hose |

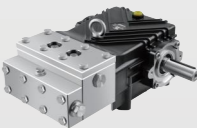
Optional Accessories



Rotating Nozzle



Dump Gun with Rotating Nozzle



Stainless Steel Pump

Features



Easy to Move

Compact design, stylish appearance,easy to move, and space-saving.



Intelligent Soft Start

Soft starter ensures smooth motor start-up, extending machine lifespan.



Stainless Steel Frame

Corrosion-resistant frame suitable for long-term use in marine environments.



Premium Plunger Pump

High-performance stainless steel pump with alloy plungers and imported seals for durability and long service life.



Low Water Level Protection

Large-capacity stainless steel water tank with float valve prevents pump damage from dry running.



Industrial-Grade Motor

Four-pole, low-speed motor with low noise, high durability, and long service life.

Models and Specifications

| Model | Voltage (Ph/V/Hz) | Flow Rate (L/min) | Pressure (Bar/Mpa/PSI) | Power (kW) | RPM (Rpm) | Weight (kg) | Dimensions (L x W x H mm) |
|------------|------------------------|------------------------|-----------------------------|-----------------|----------------|------------------|--------------------------------|
| FDE 30/50 | 3/380/50 | 30 | 500/50/7250 | 30 | 1450 | 450 | 1350 x 680 x 1200 |
| FDE 20/80 | 3/380/50 | 20 | 800/80/11600 | 30 | 1450 | 455 | 1350 x 680 x 1200 |
| FDE 15/100 | 3/380/50 | 15 | 1000/100/14500 | 30 | 1450 | 455 | 1350 x 680 x 1200 |
| FDE 36/50 | 3/440/60 | 36 | 500/50/7250 | 36 | 1750 | 450 | 1350 x 680 x 1200 |
| FDE 24/80 | 3/440/60 | 24 | 800/80/11600 | 36 | 1750 | 455 | 1350 x 680 x 1200 |
| FDE 18/100 | 3/440/60 | 18 | 1000/100/14500 | 36 | 1750 | 455 | 1350 x 680 x 1200 |

FCE-EX SERIES

Explosion-Proof High Pressure Washer



Key Components

| | |
|--|---------------------------------|
| ■ Explosion-Proof Electric Control Box | ■ Stainless Steel Water Tank |
| ■ Industrial-Grade Explosion-Proof Motor | ■ Stainless Steel Float Valve |
| ■ Coupling | ■ Carbon Steel Heavy-Duty Frame |
| ■ High-Pressure Plunger Pump | ■ Solid Tires |
| ■ Pressure Regulating Valve | ■ Swivel Wheels |
| ■ Safety Valve | ■ High-Pressure Gun |
| ■ Stainless Steel Pressure Gauge | ■ Fan-Shaped Nozzle |
| ■ High-Precision Filter | ■ High-Pressure Hose |

Optional Accessories



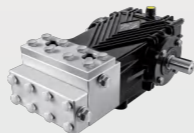
Rotating Nozzle



Brass Pump



Nickel Plated Brass Pump



Stainless Steel Pump

Features



Convenient to Move

Compact design, easy to handle, and space-saving.



Explosion-Proof Motor

Ensures safe operation in explosive atmospheres.



High Explosion-Proof Rating

Optional ATEX, Exd IIB T4 Gb and Exd II C T4 Gb certifications



Explosion-Proof Control Box

Provides reliable protection in explosive atmospheres.



Premium Plunger Pump

High-pressure pump with ceramic plungers and durable seals for long-term stable performance.

Models and Specifications

| Model | Voltage (Ph/V/Hz) | Flow Rate (L/min) | Pressure (Bar/Mpa/PSI) | Power (kW) | RPM (Rpm) | Weight (kg) | Dimensions (L x W x H mm) |
|--------------|----------------------|----------------------|---------------------------|---------------|--------------|----------------|------------------------------|
| FCE-EX 21/35 | 3/380/50 | 21 | 350/35/5075 | 15 | 1450 | 310 | 1250 x 580 x 1250 |
| FCE-EX 15/50 | 3/380/50 | 15 | 500/50/7250 | 15 | 1450 | 310 | 1250 x 580 x 1250 |
| FCE-EX 22/50 | 3/380/50 | 22 | 500/50/7250 | 22 | 1450 | 310 | 1250 x 580 x 1250 |
| FCE-EX 18/60 | 3/380/50 | 18 | 600/60/8700 | 22 | 1450 | 310 | 1250 x 580 x 1250 |

FDE-EX SERIES

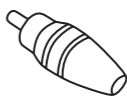
Explosion-Proof High Pressure Washer



Key Components

| | |
|--|-------------------------|
| ■ Intelligent Electric Control Box | ■ Stainless Steel Frame |
| ■ Industrial-Grade Explosion-Proof Motor | ■ Solid Tires |
| ■ High-Pressure Plunger Pump | ■ Swivel Wheels |
| ■ Pressure Regulating Valve | ■ High-Pressure Gun |
| ■ High-Precision Filter | ■ Fan-Shaped Nozzle |
| ■ Stainless Steel Pressure Gauge | ■ High-Pressure Hose |

Optional Accessories



Rotating Nozzle



Dump Gun with Rotating Nozzle

Features



Convenient to Move

Compact design, easy to handle, and space-saving.



Explosion-Proof Motor

Ensures safe operation in explosive atmospheres.



High Explosion-Proof Rating

Optional ATEX, Exd IIB T4 Gb and Exd II C T4 Gb certifications



Explosion-Proof Control Box

Provides reliable protection in explosive atmospheres.



Premium Plunger Pump

High-pressure pump with ceramic plungers and durable seals for long-term stable performance.



Stainless Steel Pump

Models and Specifications

| Model | Voltage (Ph/V/Hz) | Flow Rate (L/min) | Pressure (Bar/Mpa/PSI) | Power (kW) | RPM (Rpm) | Weight (kg) | Dimensions (L x W x H mm) |
|---------------|----------------------|----------------------|---------------------------|---------------|--------------|----------------|------------------------------|
| FDE-EX 30/50 | 3/380/50 | 30 | 500/50/7250 | 30 | 1450 | 450 | 1350 x 680 x 1200 |
| FDE-EX 20/80 | 3/380/50 | 20 | 800/80/11600 | 30 | 1450 | 450 | 1350 x 680 x 1200 |
| FDE-EX 15/100 | 3/380/50 | 15 | 1000/100/14500 | 30 | 1450 | 450 | 1350 x 680 x 1200 |
| FDE-EX 36/50 | 3/440/60 | 36 | 500/50/7250 | 36 | 1750 | 450 | 1350 x 680 x 1200 |
| FDE-EX 24/80 | 3/440/60 | 24 | 800/80/11600 | 36 | 1750 | 450 | 1350 x 680 x 1200 |
| FDE-EX 18/100 | 3/440/60 | 18 | 1000/100/14500 | 36 | 1750 | 450 | 1350 x 680 x 1200 |

FKD SERIES



Diesel High Pressure Washer

Key Components

| | |
|--|----------------------------------|
| ■ Intelligent Control Box | ■ High-precision Filter |
| ■ Diesel Engine | ■ Stainless Steel Pressure Gauge |
| ■ Water Tank | ■ Booster Pump |
| ■ Gearbox | ■ Diesel Fuel Tank |
| ■ Stainless Steel High-Pressure Plunger Pump | ■ Stainless Steel Water Tank |
| ■ Pressure Regulating Valve | ■ Float Valve |
| ■ Safety Bursting Disc | ■ Carbon Steel Frame |

Optional Accessories

| |
|------------------------|
| ■ Rotating Nozzle |
| ■ Pipe Cleaning Nozzle |
| ■ Foot Valve |
| ■ Hose Reel |
| ■ High-Pressure Pipe |
| ■ Dump Gun |
| ■ Fan-Shaped Nozzle |

Features



Easy to Control

Intelligent electric control box with LCD display for flexible and simple operation.



Premium Plunger Pump

High-pressure pump with ceramic plungers and durable seals for long-term stable operation.



Powerful Diesel Engine

Well-known brand engine with low noise, high durability, and long service life.



Low Water Level Protection

Large-capacity stainless steel water tank with internal float valve prevents pump damage from dry running.

Models and Specifications

| Model | Flow Rate (L/min) | Pressure (Bar/Mpa/PSI) | Power (kW) | RPM (Rpm) | Weight (kg) | Dimensions (L x W x H mm) |
|-------------|----------------------|---------------------------|---------------|--------------|----------------|------------------------------|
| FKD 120/100 | 120 | 1000/100/14500 | 264 | 400 | 3500 | 3600 x 1900 x 2300 |
| FKD 90/140 | 90 | 1400/140/20000 | 264 | 400 | 3500 | 3600 x 1900 x 2300 |
| FKD 50/150 | 50 | 1500/150/21755 | 150 | 400 | 3500 | 3600 x 1900 x 2300 |
| FKD 45/280 | 45 | 2800/280/40000 | 264 | 400 | 3500 | 3600 x 1900 x 2300 |

FRE SERIES



Electric High Pressure Washer

Key Components

| | |
|---|---|
| ■ Intelligent Electric Control Box (Soft Start) | ■ Water Tank |
| ■ Industrial-Grade Motor | ■ Float Valve |
| ■ Coupling | ■ Stainless Steel Pressure Gauge |
| ■ Stainless Steel High-Pressure Plunger Pump | ■ High-Precision Filter |
| ■ Pressure Regulating Valve | ■ High-Precision Stainless Steel Filter |
| ■ Safety Valve | ■ Carbon Steel Heavy-Duty Frame |

Optional Accessories

| |
|----------------------|
| ■ Rotating Nozzle |
| ■ Dump Gun |
| ■ Fan-Shaped Nozzle |
| ■ High-Pressure Hose |
| ■ Flexible Lance |
| ■ Foot Valve |

Features



Industrial-Grade Motor

Four-pole, low-speed motor with low noise, high durability, and long service life.



Intelligent Soft Start

Soft starter ensures smooth motor start-up, extending machine lifespan.



Stainless Steel Frame

Corrosion-resistant frame suitable for long-term use in marine environments.



Premium Plunger Pump

High-performance stainless steel pump with alloy plungers and imported seals for durability and long service life.



Low Water Level Protection

Large-capacity stainless steel water tankwith float valve prevents pump damage from dry running.

Models and Specifications

| Model | Voltage (Ph V Hz) | Flow Rate (L/min) | Pressure (Bar/Mpa/PSI) | Power (kW) | RPM (Rpm) | Weight (kg) | Dimensions (L x W x H mm) |
|-------------|------------------------|------------------------|-----------------------------|-----------------|----------------|------------------|--------------------------------|
| FRE 120/100 | 3/380/50 | 120 | 1000/100/14500 | 252 | 400 | 2800 | 3300 x 1900 x 2100 |
| FRE 90/140 | 3/380/50 | 90 | 1400/140/20300 | 150 | 400 | 2800 | 3300 x 1900 x 2100 |
| FRE 50/150 | 3/380/50 | 50 | 1500/150/21755 | 300 | 400 | 2800 | 3300 x 1900 x 2100 |
| FRE 45/280 | 3/380/50 | 45 | 2800/280/40000 | 250 | 400 | 2800 | 3300 x 1900 x 2100 |



Dump Gun with Rotating Nozzle



Flexible Lance



Foot Valve



Dump Gun with Rotating Nozzle



Flexible Lance



Foot Valve